

"DK Rap"

Donkey Kong 64

Composition by Grant Kirkhope

Arrangement by Olimar12345

Fresh (♩ = 124)

Rap

Here here here we go! So they're fi - nal - ly here Per -

Piano

f *mf*

Detailed description: This system contains the first three measures of the piece. The rap line is in 4/4 time with a tempo of 124 bpm. The lyrics are 'Here here here we go! So they're fi - nal - ly here Per -'. The piano accompaniment consists of a right-hand part with chords and eighth notes, and a left-hand part with a steady eighth-note bass line. Dynamics are marked as *f* (forte) and *mf* (mezzo-forte).

4

for - ming for you If you know the words you can join in too Put your

4

Detailed description: This system contains measures 4 through 6. The rap line continues with the lyrics 'for - ming for you If you know the words you can join in too Put your'. The piano accompaniment continues with similar rhythmic patterns. Measure numbers 4 and 6 are indicated above the rap line.

7

hands to - gether if you want to clap as we take you through this

7

Detailed description: This system contains measures 7 through 9. The rap line continues with the lyrics 'hands to - gether if you want to clap as we take you through this'. The piano accompaniment continues. Measure numbers 7 and 9 are indicated above the rap line.

10

mon - key rap! Huh! D - K! Don - key Kong! He's the

10

f

13

lea - der of the bunch you know him well He's fi - nal - ly back to

13

mf

16

kick some tail His co - co - nut gun can fire in spurts if he

16

mf

19

shoots ya it's gon - na hurt! He's big - ger, fast - er, and

19

mf

"DK Rap"

22

strong - er too He's the first mem - ber of the D. - K. crew! Huh!

Piano accompaniment for measures 22-24. The right hand features chords in the treble clef, and the left hand features a rhythmic bass line in the bass clef. The key signature has two sharps (F# and C#).

25

D - K! Don - key Kong! D - K!

Piano accompaniment for measures 25-27. The right hand features chords in the treble clef, and the left hand features a rhythmic bass line in the bass clef. The key signature has two sharps (F# and C#). A dynamic marking of *f* is present.

29

28

Don - key Kong is here! This Kong's got style so li - sten up dudes She can

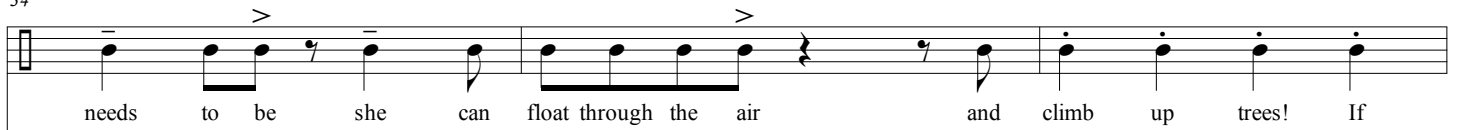
Piano accompaniment for measures 28-30. The right hand features chords in the treble clef, and the left hand features a rhythmic bass line in the bass clef. The key signature has two sharps (F# and C#). A dynamic marking of *mf* is present.

31

shrink in size to suit her mood She's quick and nim - ble when she

Piano accompaniment for measures 31-33. The right hand features chords in the treble clef, and the left hand features a rhythmic bass line in the bass clef. The key signature has two sharps (F# and C#).

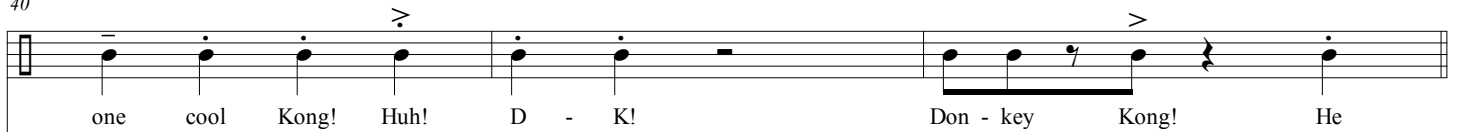
34



37

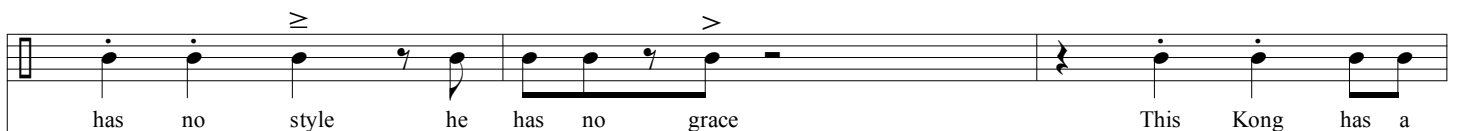


40



f

43



mf

46

fun - ny face He can hand - stand when he needs to and

49

stretch his arms out just for you In - flate him - self just

52

like a bal - loon This cra - zy Kong just digs this tune! Huh!

55

D - K! Don - key Kong! D - K!

58

Don - key Kong is here! He's back a - gain and a - bout time too and

61

this time he's in the mood He can fly real high with his

64

jet - pack on with his pis - tols out he's one tough Kong! He'll

67

make you smile when he plays his tune but Krem-ings be - ware 'cause he's

70

af - ter you! Huh! D - K! Don - key Kong! Huh!

70

f

73

Fi - nal - ly, he's here for you It's the last mem - ber of the

73

mf

8va

76

D. K. crew! This Kong's so strong it is - n't funny Can

76

(8va)

79

make a Kremling cry out for mummy Can pick up a boulder with

79

(8va)

82

rel - a - tive ease — Makes crush - ing rocks seem such a breeze He

82

(8va)

85

may move slow he can't jump high but this Kong's one

85

(8va)

89

hell of a guy! Huh! Come on, Cran - ky, take it to the fridge!

88

(8va)

91

Wal - nuts, pea - nuts, Pine-app - le smells, grapes, melons, o-rang - es and co - co - nut shells! Ahh yeah!

91

(f)

Repeat and F.O.